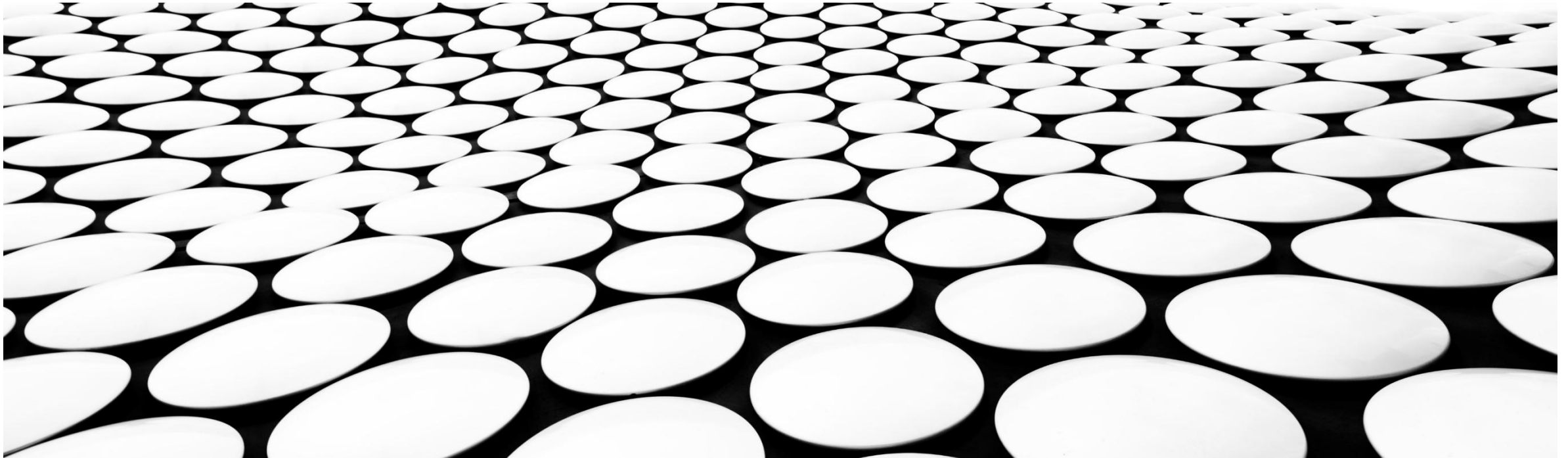
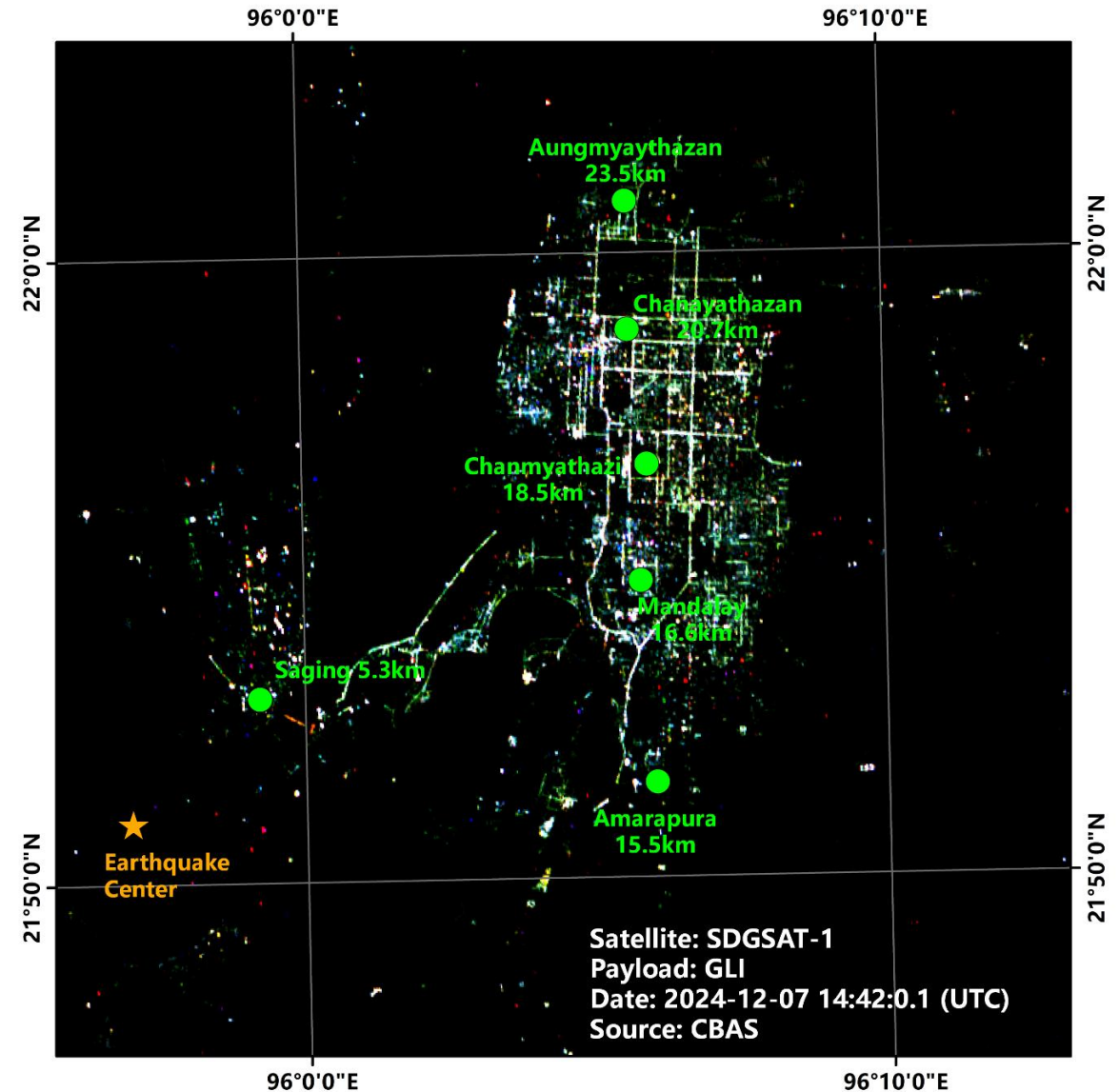


ASSESSMENT OF MYANMAR EARTHQUAKE BASED ON HIGH SPATIAL NIGHTTIME LIGHT DATA FROM VIIRS DNB

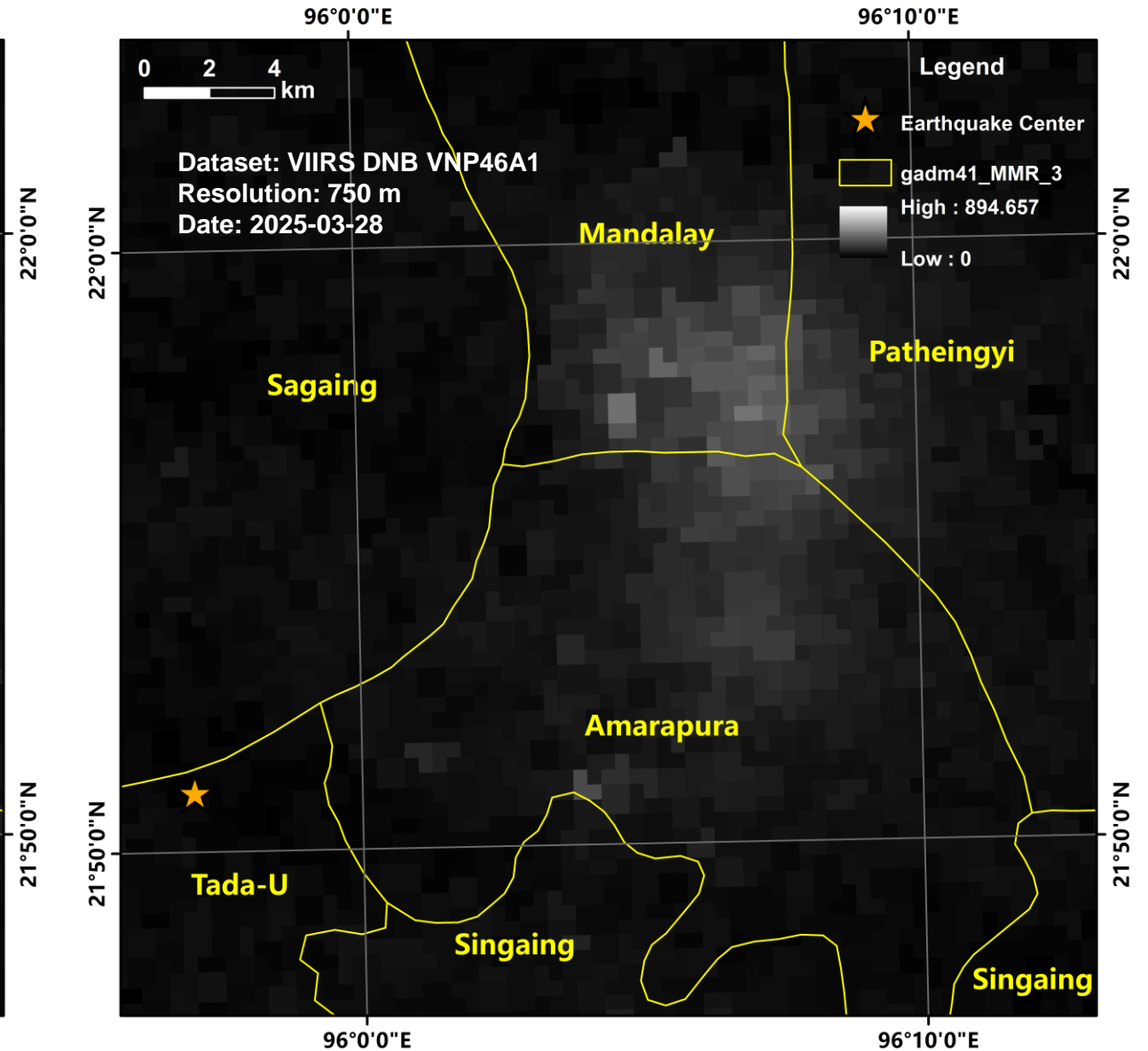
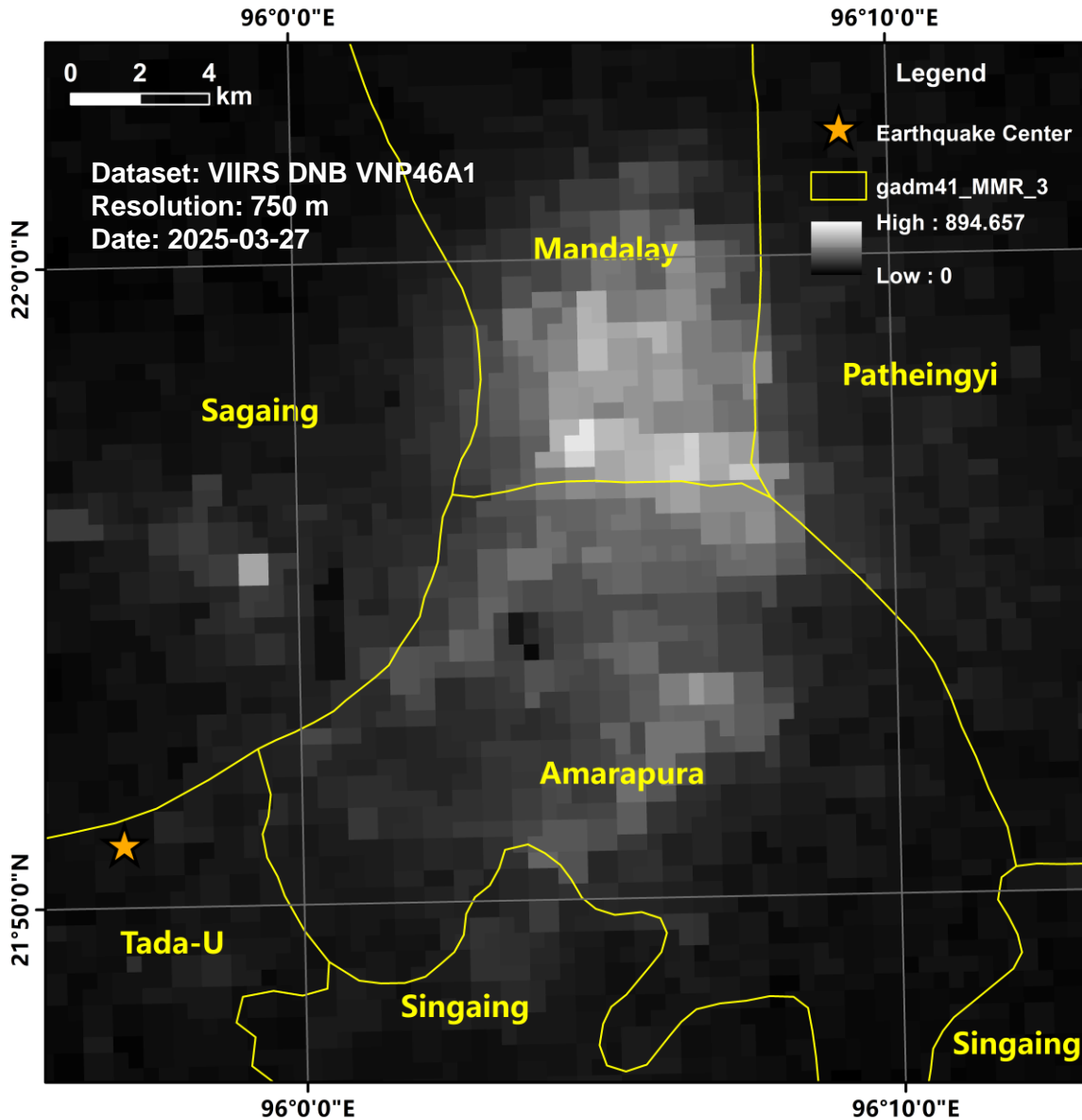


INTRODUCTION

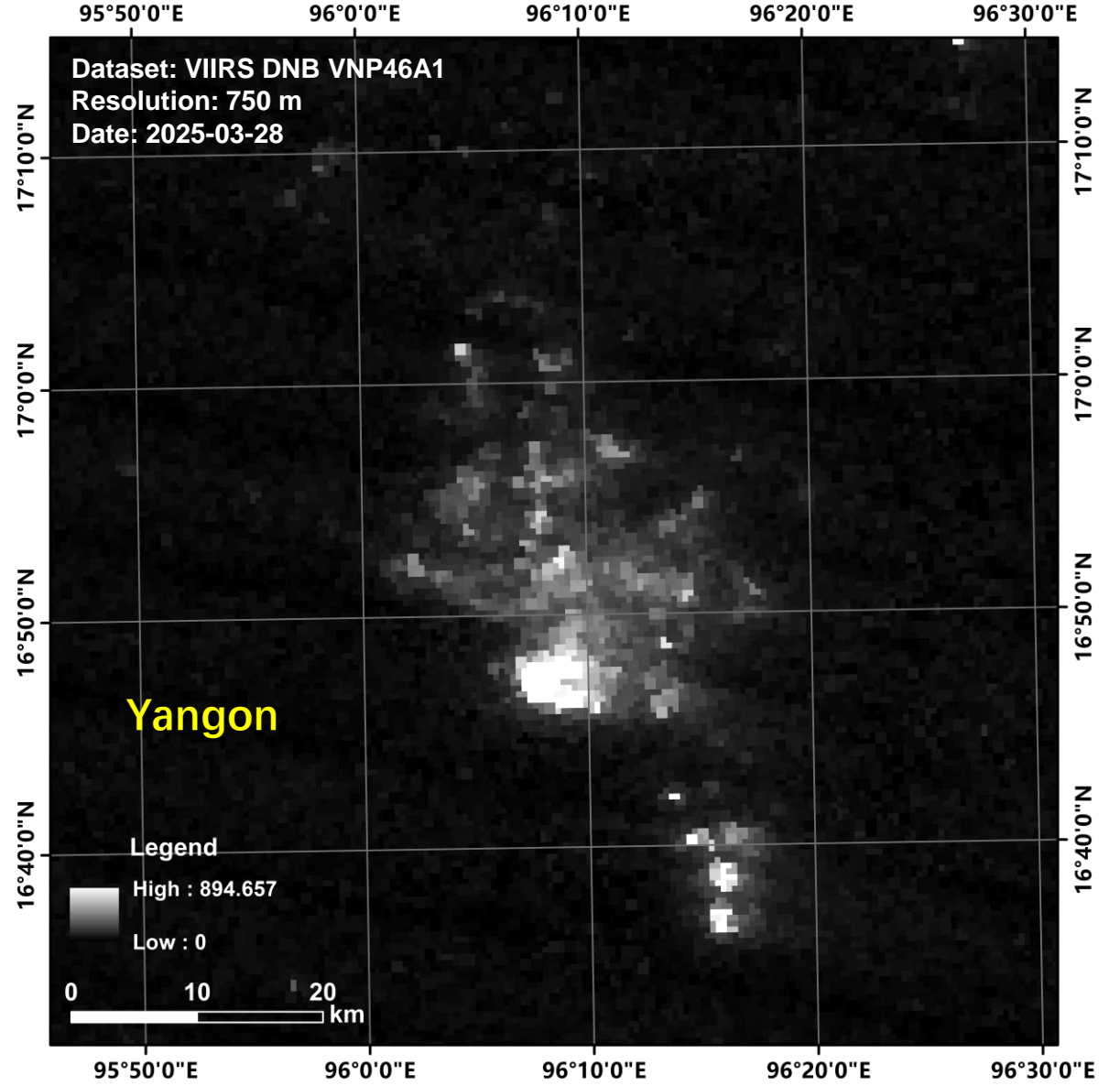
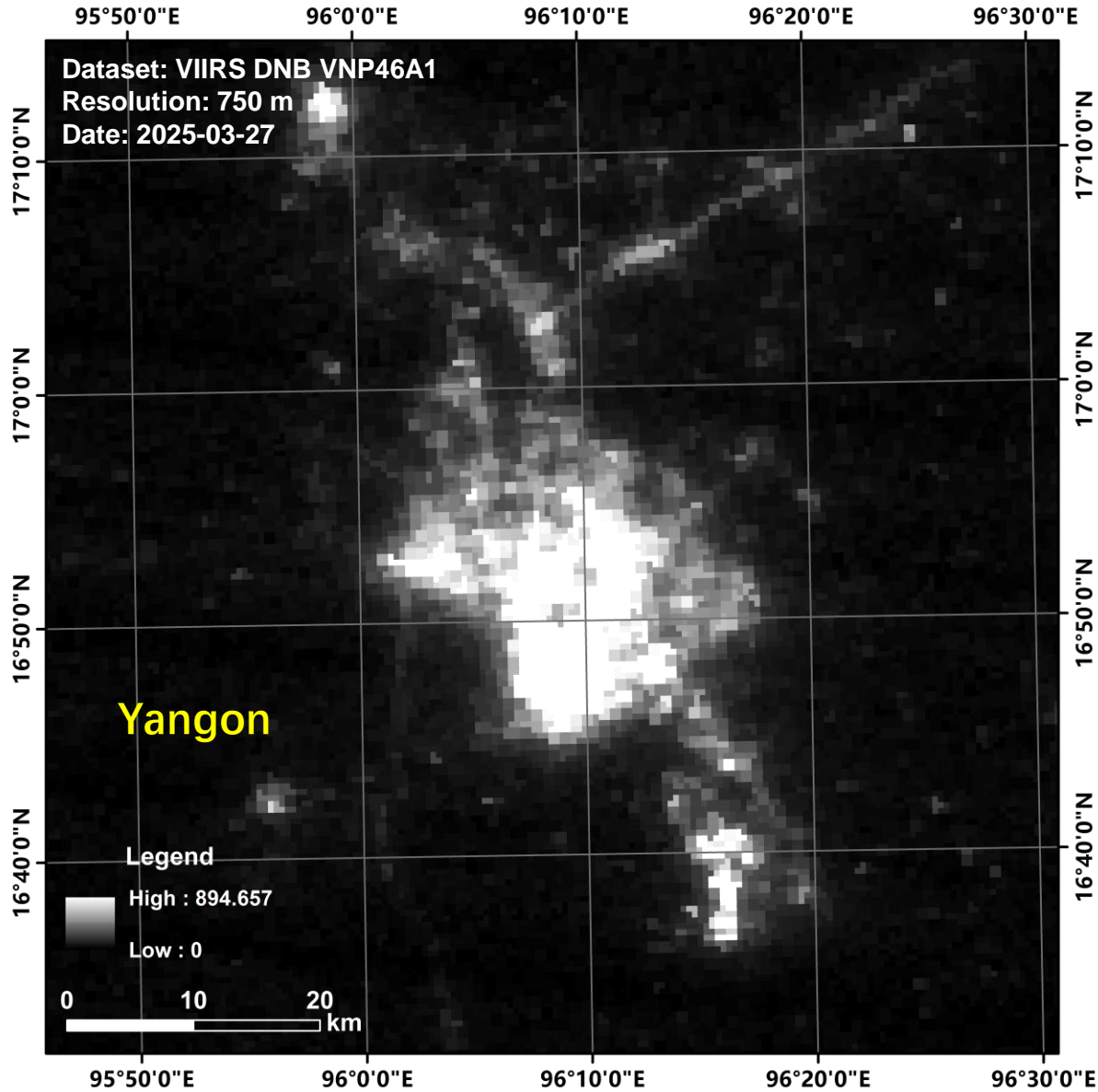
- A powerful 7.7 magnitude earthquake (Center: 21.85°N, 95.95°E) struck Myanmar on Friday at 12:50 am (local time). The quake struck near Mandalay, Myanmar's second-largest city of more than a million people. An aftershock of magnitude 6.4 (21.60°N, 95.95°E) was registered at 13:02 (local time).
- In response, the CBAS and IRDR initiated emergency mapping activities in the affected areas, mainly the nighttime light and synchronize thermal infrared spectrometer (TIS) data, to support the humanitarian response.



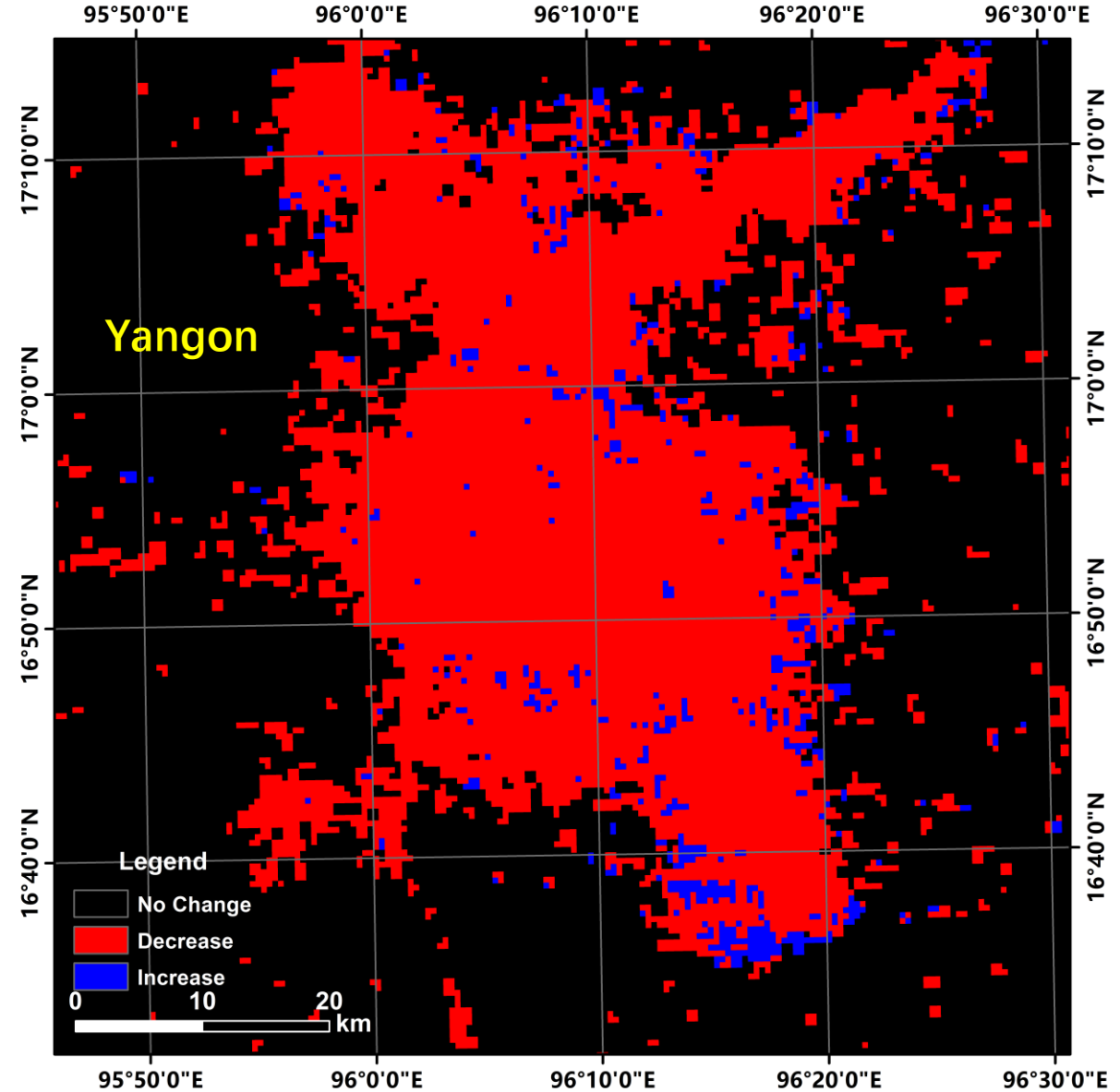
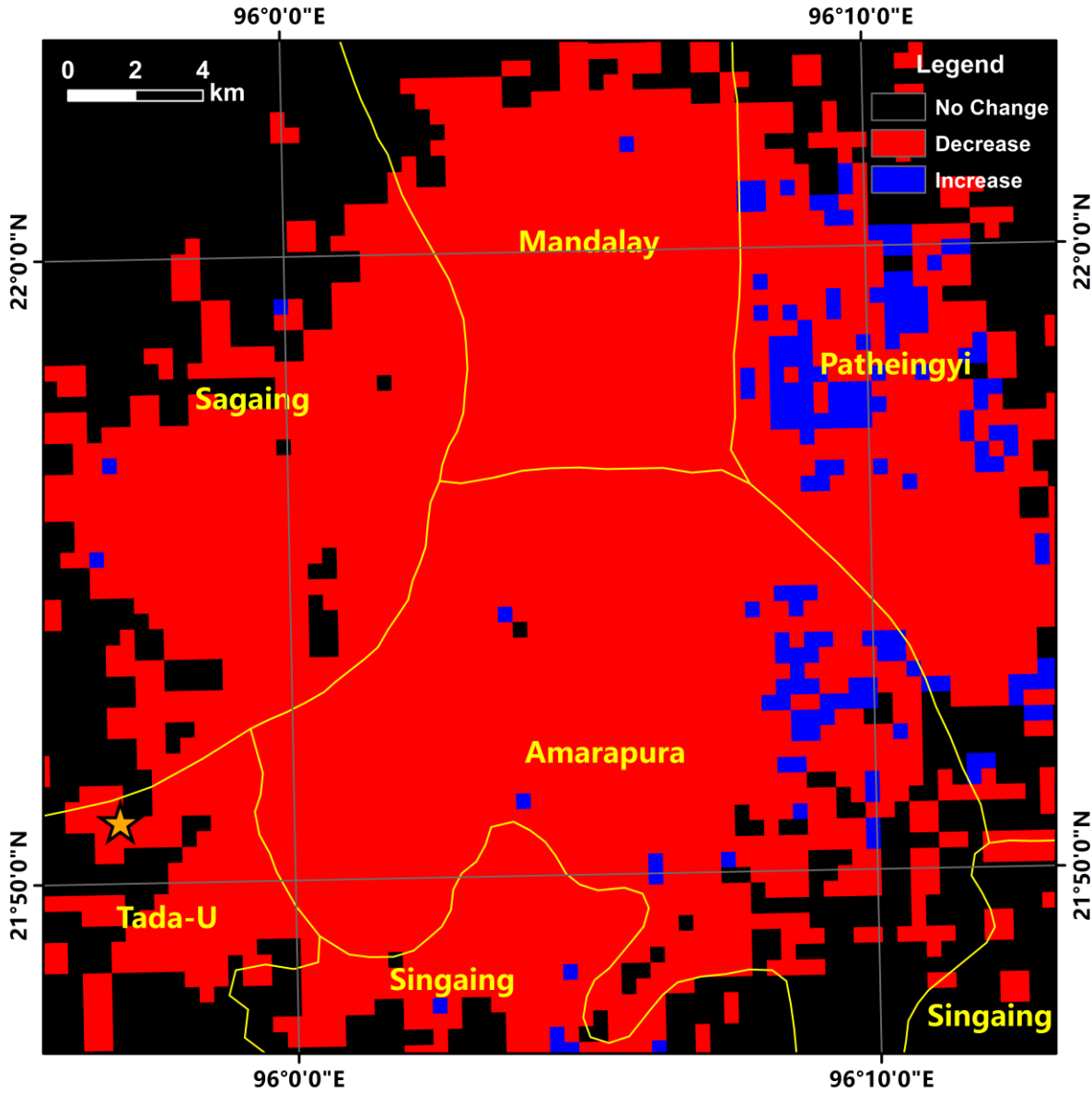
IMAGES



IMAGES



ANALYSIS



PRELIMINARY RESULTS



- As a result of the earthquake, the total decrease in light in the Mandalay region was 41.0%, including 110 km² of light increase area and 1912 km² of light decrease area.
- The total decrease in light in the Yangon region was 40.7%, including 410 km² of light increase area and 6300 km² of light decrease area.
- The results are for reference only due to the influence of clouds and fog and the shimmering angle of view.
- Observation of the affected area will continue.

SOURCES



(1) Satellite Images

Satellite Data: VIIRS VNP46A2

Imagery Date: from 27 March, 28 March 2025

Resolution: 750 m

Copyright: NASA

Source: NASA

(2) Ancillary Data

Administrative boundaries: Database of Global

Administrative Areas Version: 4.10

Buildings polygon: Open Street Map

(3) Analysis & Production

Analysis: International Research Center of Big Data for Sustainable Development Goals (CBAS)

Production: International Research Center of Big Data for Sustainable Development Goals (CBAS) & Integrated Research on Disaster Risk (IRDR)

(4) Contact us

sdgsat1@cbas.ac.cn

connect@irdrinternational.org



This publication is available in Open Access under the Creative Commons Attribution-Non Commercial-Share Alike 4.0 International License.